



Action code: **WHEN CONVENIENT**

New Spring Loaded Seals for Fuel Oil Pump

SL10-538/SNH
November 2010

Concerns

Owners and operators of
MAN Diesel & Turbo
four-stroke diesel engines.
Type: L23/30H - 900 rpm

Dear Sir/Madam

Since the introduction of the L23/30H (900 rpm) engines in the beginning of the 1990s, more than 2,200 engines have entered into service.

As part of MAN Diesel & Turbo's programme for continuous development of our engines, we have introduced two spring-loaded seals of the U-type seal in the fuel oil pump instead of O-rings which have been standard so far.

The purpose of this Service Letter is to inform the ship operators about the possibility of retrofitting the modified components to their vessels in service.

Introduction

The new seals are placed on the fuel pump barrel upper and lower parts.

The U-type seal is more resistant for complying with today's fuel oil and more resistant to cavitations in the fuel oil pump and further enhance for reliability of the engine, and to avoid contamination of the lubricating oil.

To facilitate ordering of the U-type seals in the future, we enclosed spare part Plate 51730-11H (Nico), 51730-12H (L'Orange) and tool plate 52014-08H.

Questions or comments to this Service Letter should be directed to MAN Primeserv in Holeby.

Yours faithfully

Steen Hansen
Superintendent
Technical Service
PrimeServ Holeby

Jørgen P. Nielsen
Senior Specialist
PrimeServ Holeby



MAN Diesel & Turbo
Østervej 2
4960 Holeby
Denmark
Phone: +45 54 69 31 00
Fax: +45 54 69 30 30
mandieselturbo-hol@mandieselturbo.com

MAN Diesel & Turbo
Niels Juels Vej 15
9900 Frederikshavn
Denmark
Phone: +45 96 20 41 00
Fax: +45 96 20 40 30
mandieselturbo-frh@mandieselturbo.com

MAN Diesel & Turbo
Branch of MAN Diesel & Turbo SE,
Germany
CVR No.: 31611792
Head office: Teglholtsgade 41
2450 Copenhagen SV, Denmark
German Reg.No.: HRB 22056
Amtsgericht Augsburg

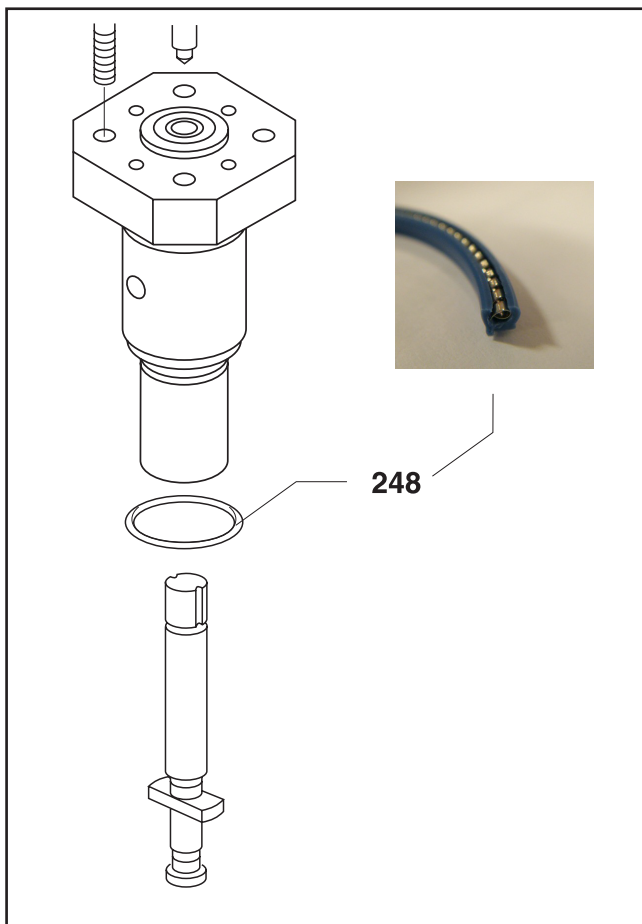
U-type seal on the barrel upper parts

Heat the upper U-type seal in 90-100 degrees C hot water for five minutes as a minimum and mount it in the groove immediately after by using special tools.

Mount the guide stick 003 on the barrel, place the spring-loaded sealing ring on the cone with the spring facing downwards.

Use the pusher tool 002 to push the sealing ring into the groove. After mounting the sealing ring, compress by pressing the seizer 001 tool over the sealing ring.

Lubricate the barrel prior to mounting.



U-type seal in the fuel oil pump

For mounting of the sealing ring in the fuel oil pump housing, machining inside the housing will be necessary. This inside machining is quite simple and can be carried out at one of our service hubs or authorized repair shops.

Or

The fuel oil pumps can be delivered on exchange basis during which process the housing is machined and mounted with new seals and new plunger/barrel.



The sealing ring must be mounted with the spring facing upwards. Press the sealing by hands until it “clicks” down.

Lubricate the housing prior to mounting of the barrel in the housing and carry out the assembling according to the instruction book.