

Up-tower recovery

MAN PrimeServ

The focus on up-tower repairs in the wind energy sector is increasing, and the link between cost savings and reducing downtime is more evident now than ever before.

When a large mechanical component is damaged, we help wind turbine operators save costs and reduce downtime by bringing the workshop

up-tower and recovering the wind turbine on-site instead of transporting the component to a workshop on the ground.

24/7 and 365 days a year, our skilled service engineers recover generator shafts, yaw rings and other large components to the manufacturer's specifications on-site.

Whether onshore or offshore, we have extensive experience in up-tower repair minimizing expensive downtime for the wind energy sector worldwide. We work closely with our customers constantly improving our repair processes and finding new and innovative tools that restore wind turbine performance.

Our services to the wind industry include:

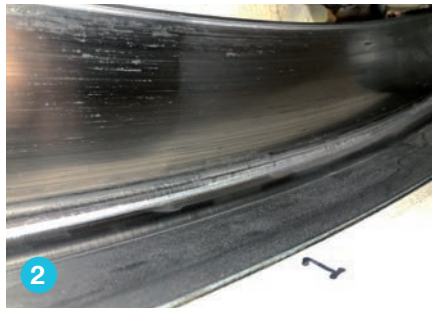
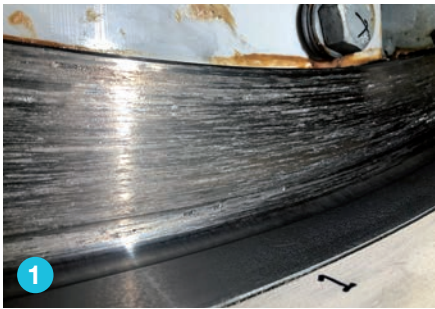
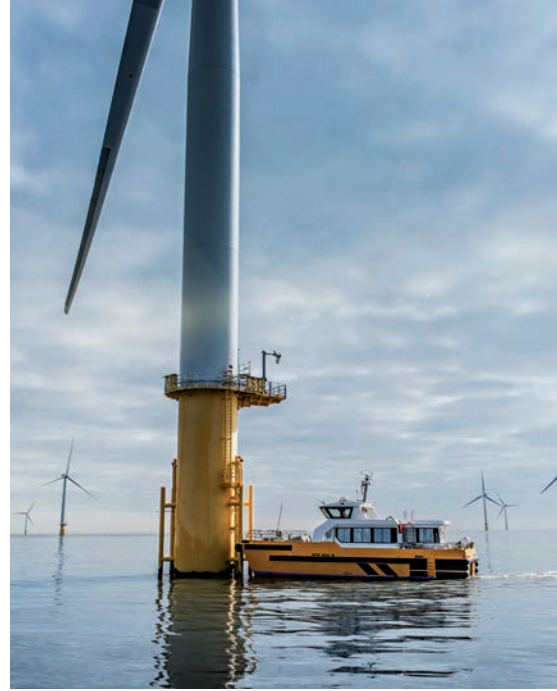
- Generator shaft recovery
- Yaw / brake disc recovery
- Tooth recovery
- Hollow shaft recovery
- Stud & thread recovery
- Flange recovery
- Measurement & alignment
- Customized recovery

As a company that thrives most when challenged, we are proud to evolve with the exciting technology in the wind industry.



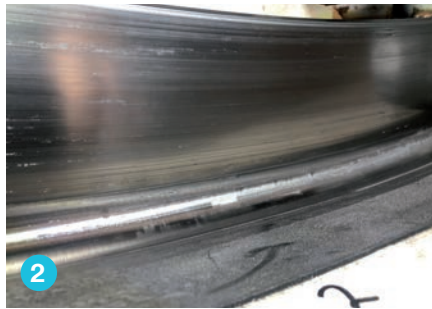
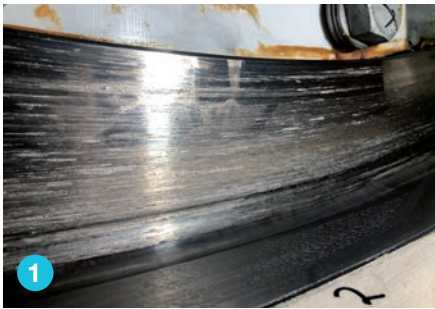
Yaw ring recovery

Surface honing



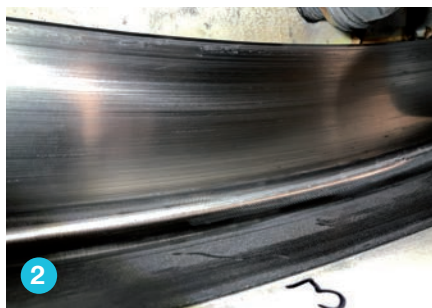
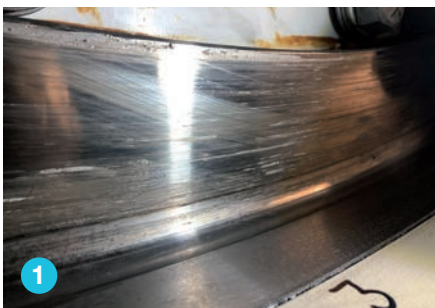
In cases where the surface of the yaw ring has been scratched, typically by a spring or a claw, rectification is necessary to assure continued optimal operation of the wind turbine.

A specialized tool is mounted to hone the surface back to acceptable roughness while rotating the nacelle. Final measurements assure that the achieved surface roughness is within the specified tolerances. The entire procedure takes a couple of days on average, depending on the severity of the damage.



1 Surface before honing

2 Surface after honing



MAN Energy Solutions
2635 Ishøj, Denmark
P +45 4373 6620
osr-cph@man-es.com
www.man-es.com/primesserv

All data provided in this document is non-binding. This data serves informational purposes only and is not guaranteed in any way. Depending on the subsequent specific individual projects, the relevant data may be subject to changes and will be assessed and determined individually for each project. This will depend on the particular characteristics of each individual project, especially specific site and operational conditions.

Copyright © MAN Energy Solutions. Printed in Denmark Prinftotrekroner-Oct-2021-3010-0438-00