

MUN2016-04-20

## Reduced installation costs with the new design of MAN Holeby L23/30H

The L23/30H engine has a long history of operational stability and has significantly increased its number of sales in recent years. The engine is popular with shipowners for a number of reasons, not least for its broad market penetration that has ensured global recognition on account of its reliability.

The new monocoque design offers several advantages and is aimed at reducing the installation cost without compromising the MAN quality standard.

### Monocoque design improvements

The new monocoque design is a cost-down initiative that simplifies the installation of the 23/30H. The improved base frame concept offers several technical advantages, a reduction of the overall weight of the GenSet and a stiffer construction that reduces the level of vibration.

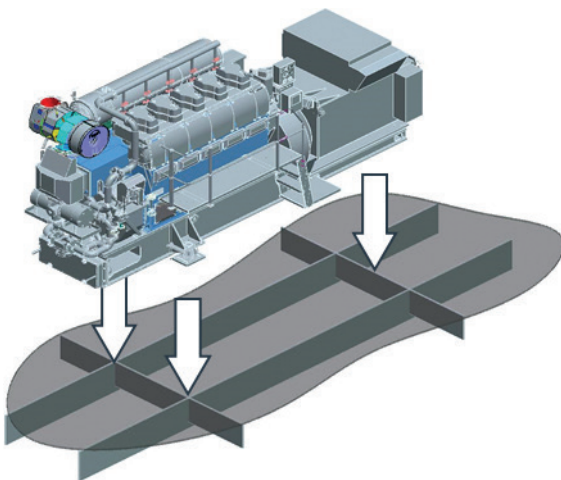


Fig. 1: Simplified installation with 3-conical support

The defining benefits are the simplified installation as well as the reduced weight and complexity of the base frame. The monocoque base frame installation is far cheaper and easier as the foundation requirements are simplified. The new design has made the traditional welded steel foundation with support towers and subsequent levelling superfluous. The installation of the GenSet now only requires three mounting points for the 3-conical support. The conical supports are self-adjusting feet with welding plates, which are welded onto the deck. The new design of the support enables the GenSet to adapt to the foundation.

### Installation cost

The key economic benefits of the redesigned base frame are the reduced engineering and installation costs resulting from:

- No engineering cost for the design of a traditional steel foundation with support towers
- Minimum steel purchase and less steel work required
- Simplified manufacturing and handling on board the ship

The cost savings may even be higher as the ships often have two or more GenSets installed.

For further details about our marine GenSets visit:

<http://marine.man.eu/gensets/marine-gensets>

For further information about specific projects, please

contact the Promotion & Customer Support Department at:

MAN Diesel & Turbo

Teglholmegade 41

2450 Copenhagen SV, Denmark

Phone +45 33 85 11 00

Fax +45 33 85 10 30

LSP@mandieselturbo.com

[www.mandieselturbo.com](http://www.mandieselturbo.com)