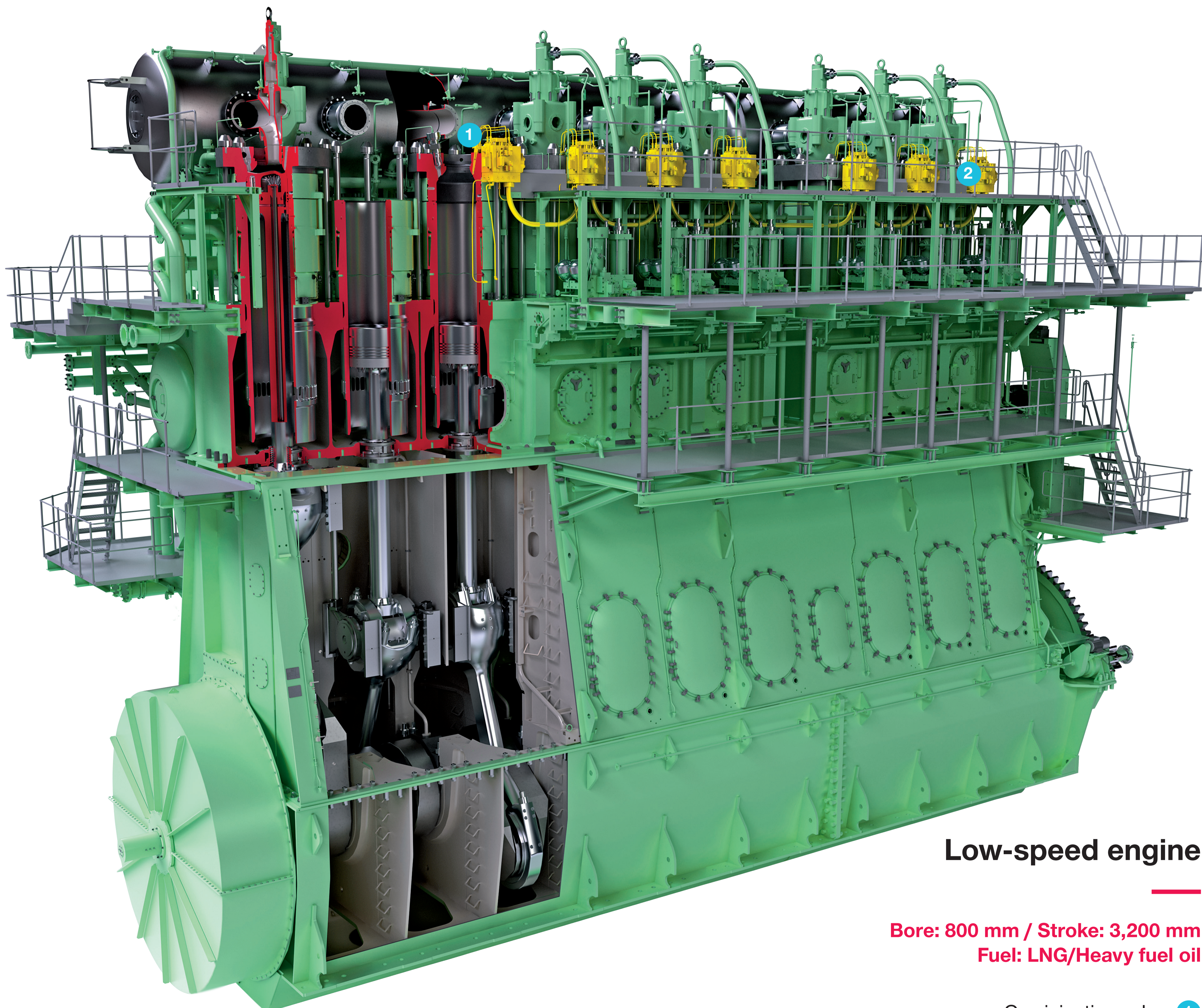




# MAN B&W 9S80ME-GI

**MAN Energy Solutions**  
Future in the making



**Low-speed engine**

**Bore: 800 mm / Stroke: 3,200 mm**  
**Fuel: LNG/Heavy fuel oil**

Gas injection valve **1**

Gas control block **2**

[www.man-es.com](http://www.man-es.com)