

PMI Adaptive Cylinder Control

MAN PrimeServ

With PMI Adaptive Cylinder Control, MAN Energy Solutions is taking engine tuning to the next level. Using a new, patented algorithm, closed loop control ensures that each individual cylinder always operates at its optimal cylinder pressure. This gives you the best engine performance and lowest possible fuel consumption at all times.

A successor to PMI Auto-tuning, PMI Adaptive Cylinder Control is a fully automatic system that will constantly help you secure optimal engine tuning regardless of engine load, load range, load changes, and varying fuel calorific values.

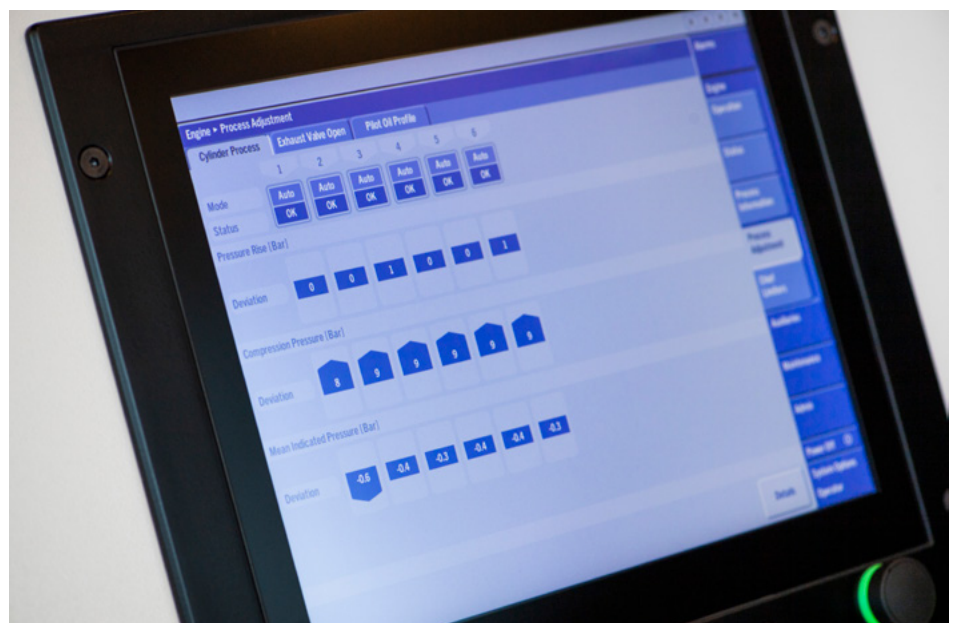
The core of the system is the patented closed loop control algorithm, which monitors and controls the pressure rise, compression pressure and the mean indicated pressure for each cylinder. Using values from the engine's performance trial as reference, the algorithm adjusts the fuel index and exhaust valve operation of each cylinder for optimal performance.

With PMI Adaptive Cylinder Control, it is no longer necessary to enter the fuel's calorific value. The system controls the individual cylinder's pressure and automatically adjusts for any fluctuations or changes to the fuel. Depending on your load profile, fuel savings will be 1 to 3.5 g/kWh compared to operation with PMI Auto-tuning.

The reliability of the system has also improved: In the event that an individual PMI sensor should fail, the control for that specific cylinder will switch to manual mode, while the remaining cylinders continue automatic operation unaffected.

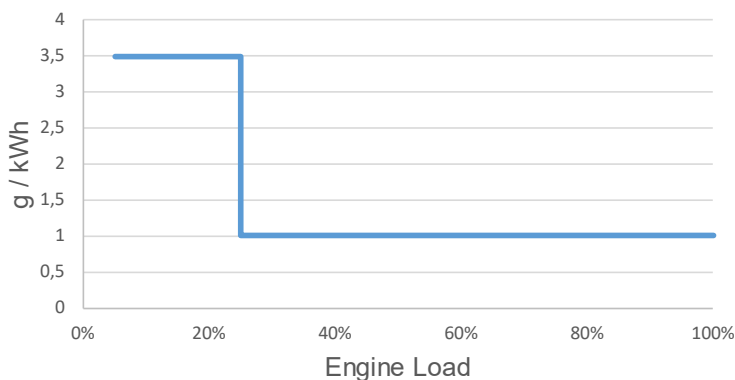
Especially slow steaming vessels will see a major improvement with the new functionalities, as the system will automatically activate from 10% engine load.

Fully automatic and working in all load ranges, PMI Adaptive Cylinder Control makes engine tuning easier than ever and ensures that you do not miss out on the benefits.



PMI Adaptive Cylinder Control

Fuel Saving



Key benefits

- Fully automatic system
- Ensuring lowest possible fuel consumption at all times
- Improved tuning of the engine
- Slow steaming support
- Automatic adjustment for fuel variations
- Increased reliability
- Great return on investment

Scope of supply

- PMI Adaptive Cylinder Control software

Applicability

- All ME-C engines with a Power Map

Reference list

- Standard configuration on engines since March 2020

Retrofit & Upgrades

(Two-stroke)

P + 45 3385 1100

retrofit2s@man-es.com

More information

Would you like to know more about the product, and how the upgrade can improve your specific engine? Then do not hesitate to contact your local MAN PrimeServ office to receive more information about the upgrade!

MAN Energy Solutions

MAN PrimeServ

Tegholmegade 41

2450 Copenhagen SV, Denmark

P + 45 3385 1100

primeserv-cph@man-es.com

www.man-es.com/primeserv

All data provided in this document is non-binding. This data serves informational purposes only and is not guaranteed in any way. Depending on the subsequent specific individual projects, the relevant data may be subject to changes and will be assessed and determined individually for each project. This will depend on the particular characteristics of each individual project, especially specific site and operational conditions.

Copyright © MAN Energy Solutions. Printed in Denmark Prinftotrekroner-FEB-19-3010-0393-00ppr