

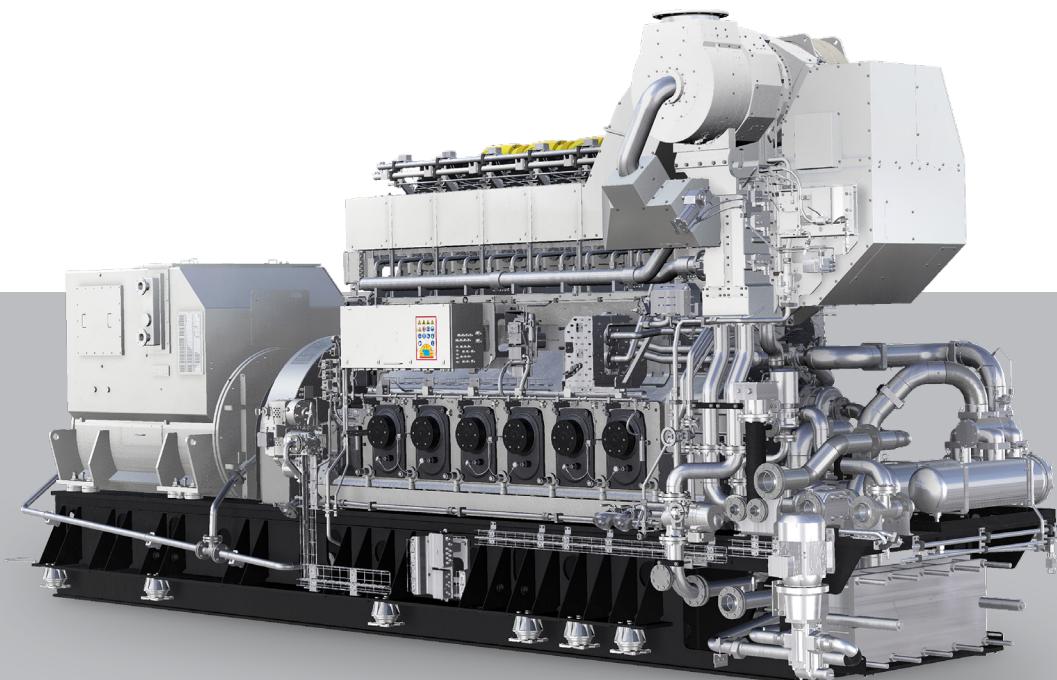
# MAN L35/44DF CD

## GenSet

The MAN 35/44DF CD is named CD for its continuous development philosophy. This model builds on proven performance, integrating the latest technology to answer the needs of an evolving market. Our main aims are to optimize CAPEX and OPEX while preparing for future demands such as Fit for 55, defossilization, and CO<sub>2</sub> reduction.

### Benefits at a glance

- High power density (fewer gensets needed)
- Genset-optimized plant equipment
- Highest power output in the auxiliary genset market
- Fully matured components
- Latest cyber security
- Full digitalization and connectivity



# MAN L35/44DF CD

## GenSet

### Dimensions

| Cyl. No.                   |    | 6      | 7      | 8      | 9      |
|----------------------------|----|--------|--------|--------|--------|
| A                          | mm | 6,270  | 6,900  | 7,480  | 8,110  |
| B <sup>1</sup>             | mm | 3,900  | 4,100  | 4,400  | 4,600  |
| C <sup>1</sup>             | mm | 10,170 | 11,000 | 11,880 | 12,710 |
| H                          | mm | 2,958  | 3,108  | 3,108  | 3,108  |
| W                          | mm | 4,631  | 4,867  | 4,867  | 4,867  |
| Engine weight <sup>1</sup> | t  | 76     | 84     | 91     | 96     |

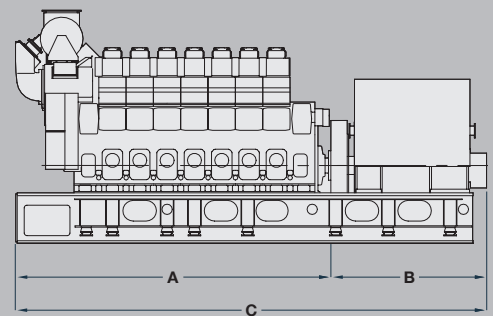
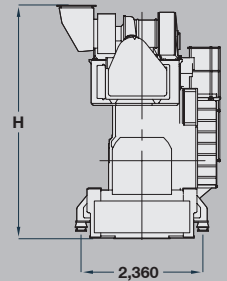
<sup>1</sup> Depending on alternator used  
Dimensions and weight specifications apply to genset and are for guidance only  
(weight given is dry weight without oil, coolant or fuel)

### Output

|                  |     |       |
|------------------|-----|-------|
| Speed            | rpm | 720   |
| Frequency        | Hz  | 60    |
| MAN 6L35/44DF CD | kW  | 3,242 |
| MAN 7L35/44DF CD | kW  | 3,783 |
| MAN 8L35/44DF CD | kW  | 4,323 |
| MAN 9L35/44DF CD | kW  | 4,864 |

Based on nominal generator efficiencies of 96.5 %  
LHV of fuel gas  $\geq 28,000$  kJ/Nm<sup>3</sup>  
(Nm<sup>3</sup> corresponds to one cubic meter of gas at 0 °C and 1.013 bar)  
Speed of 720 rpm for generator drive only

Last updated October 2023



### General

- Engine cycle: four-stroke
- No. of cylinders: 6L, 7L, 8L, 9L
- Bore: 350 mm – Stroke: 440 mm
- Power output:  
560 kW/cyl @ 720 rpm
- Main gas fuels: natural gas, bio gas
- Main liquid fuels: HFO, MGO, MDO, biofuel
- Pilot fuel: MGO, synthetic diesel

### Compliance with emission regulations

- IMO Tier III (gas mode)
- IMO Tier III (diesel mode with MAN SCR)
- IMO Tier II and IMO Tier III with LP-SCR

### Main features

- Tailor-made for auxiliary genset applications
- Adaptive combustion control, cylinder skip-firing in gas operation, and cylinder pressure monitoring
- Latest MAN SaCoS engine control system (from 2025)
- Low methane slip
- Design based on proven MAN 32/44CR and MAN 35/44DF
- Optimized CAPEX and OPEX

SCR = Selective catalytic reduction

**MAN Energy Solutions**  
86224 Augsburg, Germany  
P + 49 821 322-0  
F + 49 821 322-3382  
info@man-es.com  
www.man-es.com