

MAN

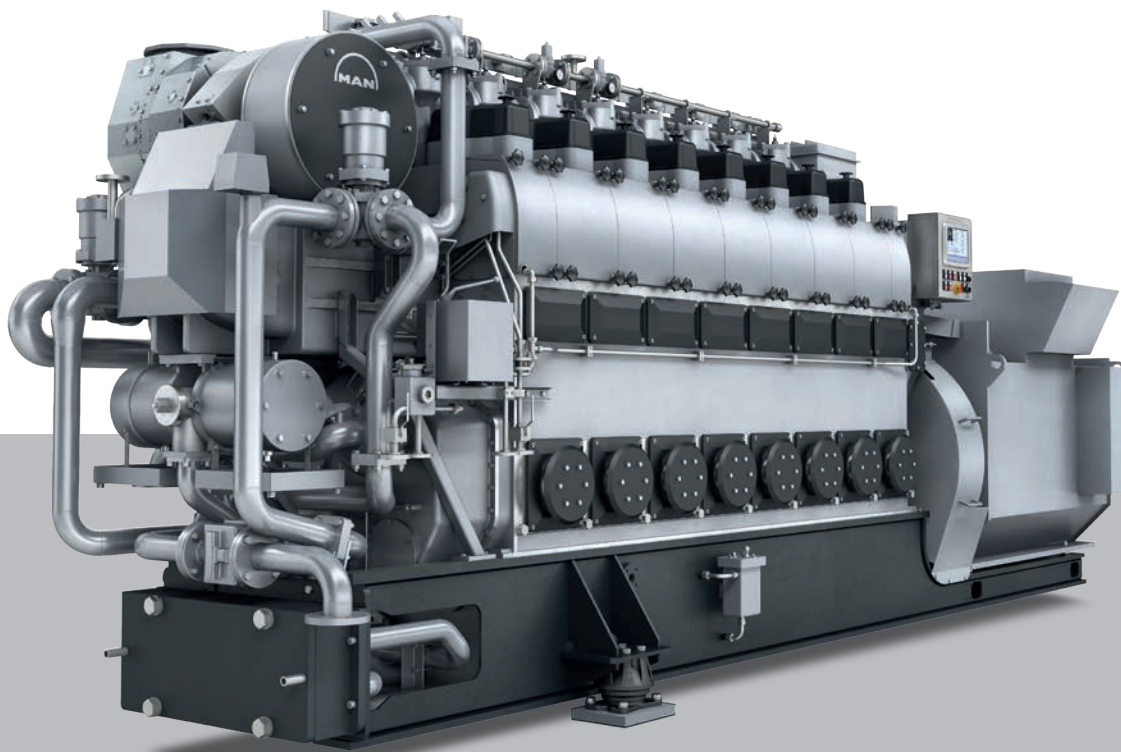
L23/30DF

GenSet

The dual fuel MAN 23/30DF is based on the popular and robust MAN 23/30 diesel GenSet, and is available for new buildings as well as an economical retrofit solution. It is ideal for many applications requiring economical power, reliability and full environmental compliance.

Benefits at a glance

- High efficiency in gas and diesel mode
- IMO Tier III compliant in gas mode
- Fast and easy installation with unique base frame design
- Long time between overhauls with low life cycle costs



MAN L23/30DF

GenSet

Dimensions

| Cyl. No. | | 5 | 6 | 6 | 7 | 7 | 8 | 8 |
|----------|-----|---------|---------|-------|---------|-------|---------|-------|
| - | rpm | 720/750 | 720/750 | 900 | 720/750 | 900 | 720/750 | 900 |
| A | mm | 3,469 | 3,839 | 3,839 | 4,209 | 4,276 | 4,579 | 4,896 |
| B | mm | 2,202 | 2,252 | 2,252 | 2,302 | 2,302 | 2,352 | 2,352 |
| C | mm | 5,671 | 6,091 | 6,091 | 6,511 | 6,578 | 6,931 | 7,241 |
| H | mm | 2,749 | 2,749 | 2,749 | 2,749 | 2,749 | 2,749 | 2,749 |
| Dry mass | t | 17.3 | 19.0 | 19.2 | 21.4 | 21.4 | 23.3 | 23.4 |

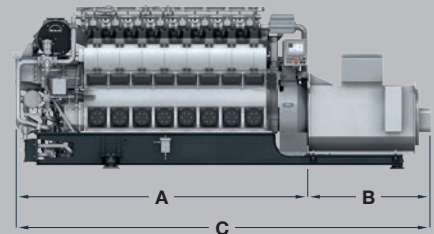


Output

| Speed | rpm | 750 | 750 | 720 | 720 | 900 | 900 |
|---------------|-----|-------|-------|-------|-------|-------|-------|
| Frequency | Hz | 50 | 50 | 60 | 60 | 60 | 60 |
| | | Eng. | Gen.* | Eng. | Gen.* | Eng. | Gen.* |
| MAN 5L23/30DF | kW | 625 | 590 | 625 | 590 | - | - |
| MAN 6L23/30DF | kW | 750 | 710 | 750 | 710 | 900 | 855 |
| MAN 7L23/30DF | kW | 875 | 830 | 875 | 830 | 1,050 | 995 |
| MAN 8L23/30DF | kW | 1,000 | 950 | 1,000 | 950 | 1,200 | 1,140 |

* Based on nominal generator efficiencies of 95 %
Gas-fuel ratio at load: 20 - 100 % 99/1 (Tier III) | Gas methane number ≥ 80

Last updated July 2018



General

- Engine cycle: four-stroke
- No. of cylinders: 5, 6, 7, 8
- Bore: 225 mm - Stroke: 300 mm
- Swept volume per cyl: 11.9 dm³

Cylinder output (MCR)

- At 720/750 rpm: 125 kW
- At 900 rpm: 150 kW
- Power-to-weight ratio:
19.5 - 27.7 kg/kW

Compliance with emission regulations

At 720/750 rpm

- IMO Tier II
- IMO Tier III (in gas mode)

At 900 rpm

- IMO Tier II

Main features

Turbocharging system

- High efficiency constant pressure MAN TCR series exhaust turbocharging system

Engine automation and control

- MAN in-house developed engine attached safety and control system MAN SaCoS_{one}

Air management

- Waste gate controlled air-fuel ratio in gas mode with jet assist for improved load response and start up time

Fuel system

- Combined fuel injection system for main liquid fuel and pilot fuel injection based on the well proven and reliable conventional MAN L23/30H engine

Gas system

- Cylinder individual low pressure gas admission system

Cooling system

- 2-string high and low temperature cooling water systems

Starting system

- Pressurized air starter (turbine type)

Engine mounting

- Resilient GenSet mounting on improved base frame "monocoque design" concept with reduced overall GenSet weight and stiff construction for reduced level of vibration and simple installation into the engine room

MCR = Maximum continuous rating

MAN Energy Solutions

86224 Augsburg, Germany
P + 49 821 322-0
F + 49 821 322-3382
info@man-es.com
www.man-es.com